



VERSACE

CERAMICS

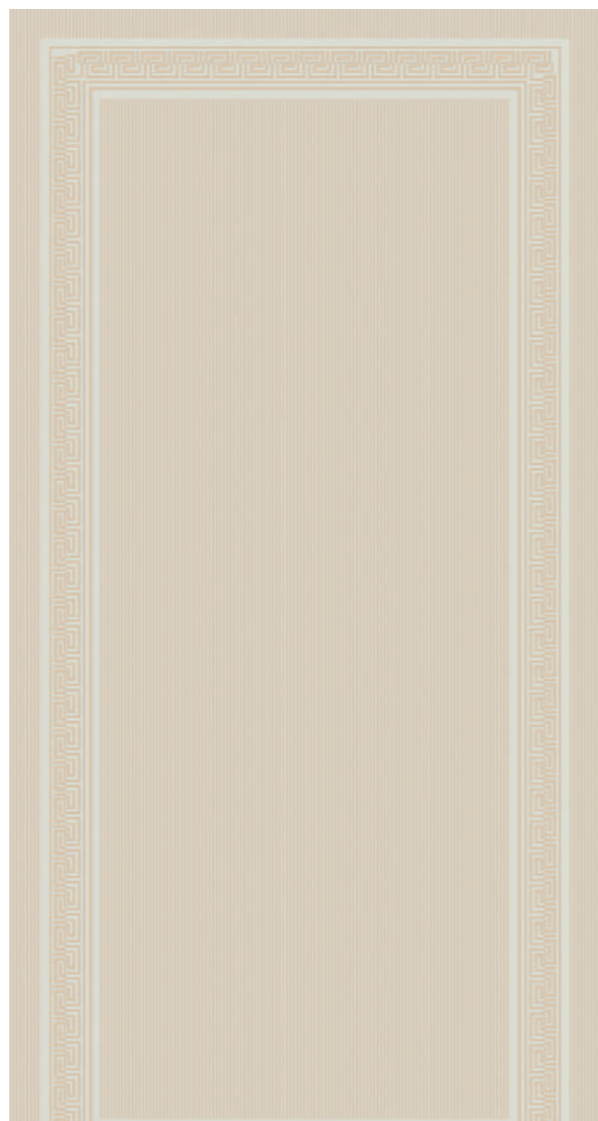
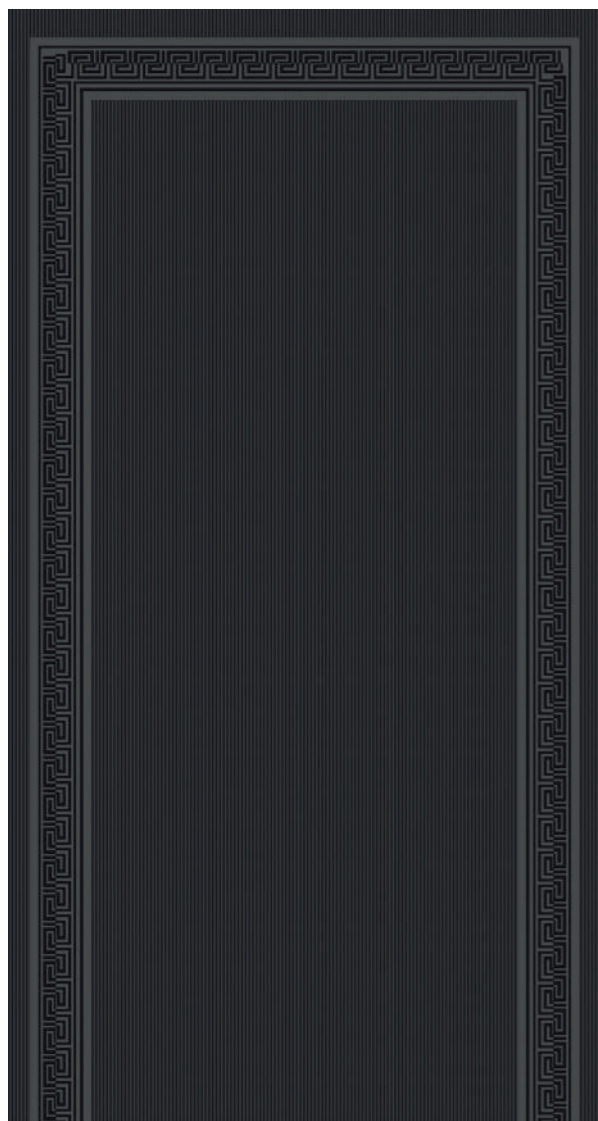
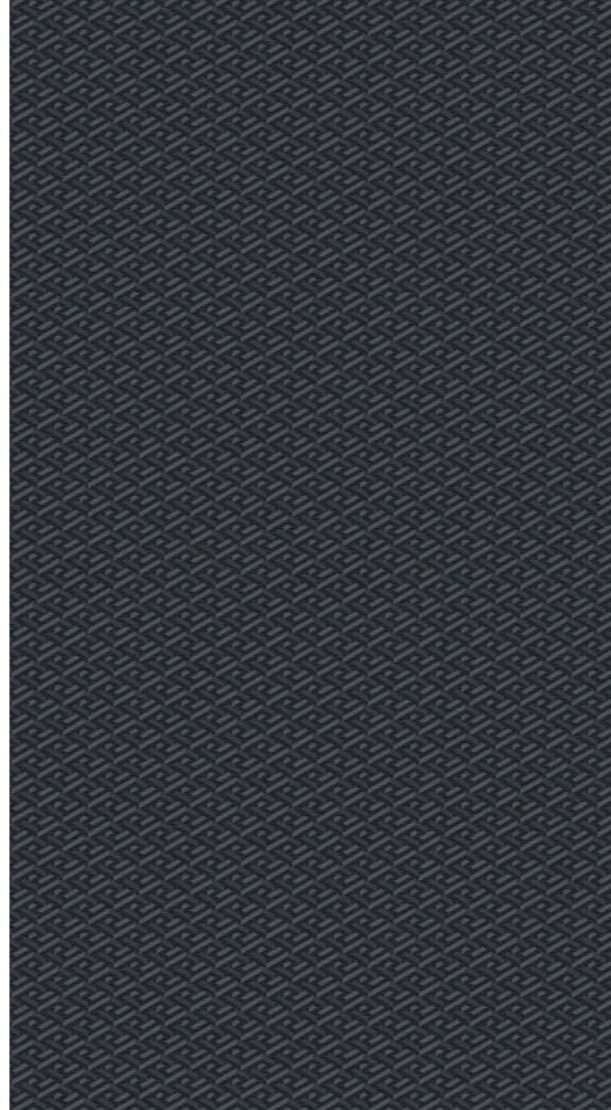
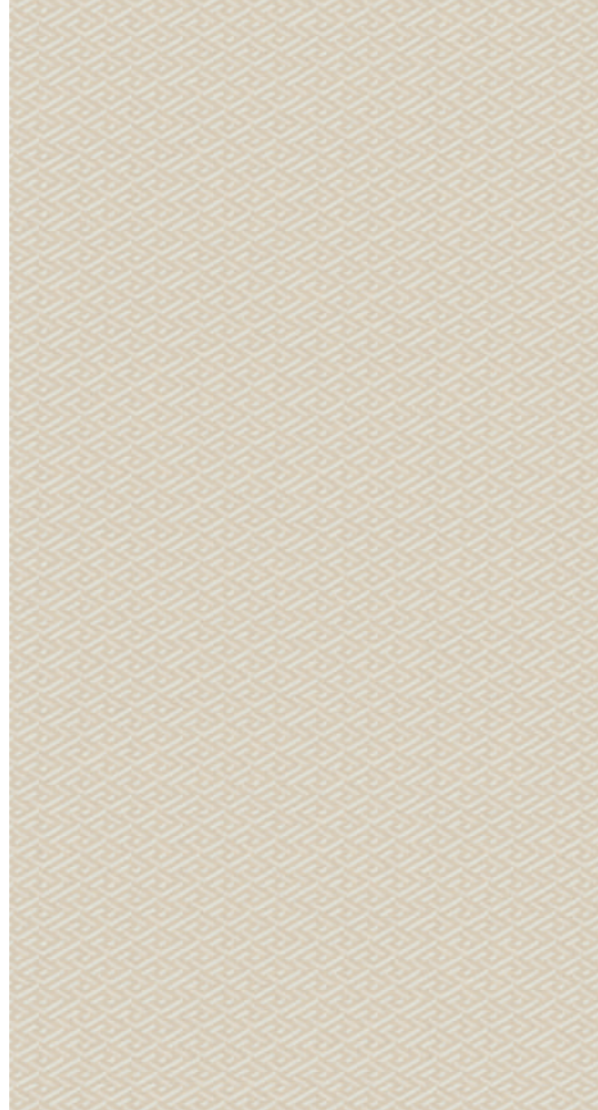
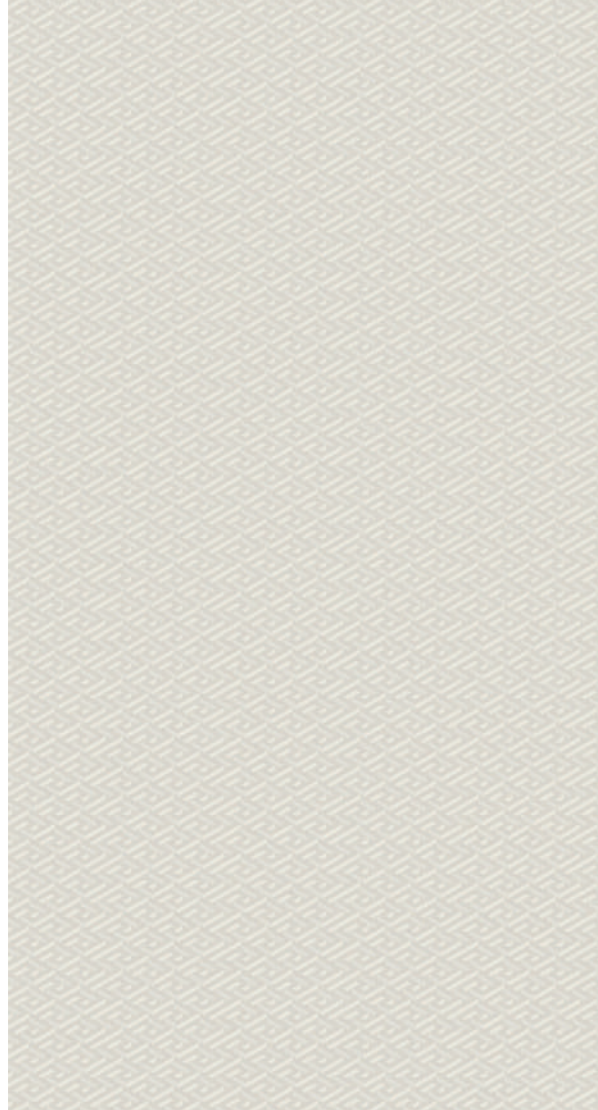
LA GRECA SIGNATURE

Le superfici
Versace Ceramics
sono pensate per
trasferire il lusso e
l'eleganza esclusiva del
lifestyle Versace in tutti
gli ambienti della casa,
a partire dai pavimenti,
passando per le zone
living, fino alla sala
da bagno.

In ogni contesto
progettuale i soggetti
iconici della maison
diventano preziosi
elementi decorativi,
che insieme alle lastre
ceramiche, trasformano
gli spazi in ambienti
sempre unici e speciali.

The Versace Ceramics
surfaces have been
designed to bring the
luxury and exclusive
elegance of the Versace
lifestyle into every room in
the home, from the living
area to the bathroom,
starting with the floors. In
every setting, the iconic
subjects of the maison
have been transformed
into beautiful décor
elements, teaming with
the ceramic tiles to bring
a uniquely special allure
to living spaces.

VERSACE
CERAMICS



La **Greca Signature**, ispirata all'eleganza di un tessuto esclusivo, afferma in maniera immediatamente riconoscibile l'appartenenza allo stile Versace. L'esclusivo micro-pattern si trasforma in una raffinata superficie per spazi dal lusso minimal-chic, uscendo dal perimetro del bagno e osando con gli accostamenti cromatici, oltre che con innumerevoli soluzioni di posa.

Inspired by the elegance of an exclusive fabric, **La Greca Signature** is instantly recognisable as belonging to the iconic Versace style. The exclusive micro-pattern is transformed into an elegant surface ideal for luxurious, minimal-chic spaces. Suitable for applications that extend beyond the confines of the bathroom, it lends itself to bold colour combinations and countless installation layouts.



BLACK

Wall
Cut Black 20x60
Insert Cream 11,5x20



Floor
Black, White 60x60

Wall
Black, White 20x60



Floor
Black 20x120
Black, White 20x20, 20x60

Wall
Maximvs Panda Lux 160x320
Maximvs Calacatta Bright Lux 120x280

Furniture
Maximvs Calacatta Bright Lux



Floor
Black 20x120
Black, White 20x20, 20x60

CREAM

Floor
Cream 20x120





Floor
Cream 20x120

Wall & Furniture
Gemstone Cristallo Rosa Lux 120x280



Floor
Chevron Cream 10x60

Furniture
Maximvs Calacatta
Bright Lux

Wall
Boiserie Cream 60x120
Fascia Logo Cream 10x60
Battiscopa Cream 15x60
Torello Cream 6x60



Floor
Cut Cream 60x60
Insert Black, Gold 11,5,x20



Floor
Cut Cream 60x60
Insert Black 11,5x20



WHITE

Floor
Chevron White 10x60

Wall
Boiserie White 60x120
Battiscopa White 15x60
Torello White 6x60

Floor
Chevron White 10x60



Floor
Chevron White 10x60

Wall
Boiserie-White 60x120
Battiscopa White 15x60
Torello White 6x60

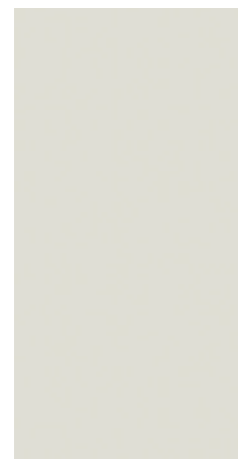


Floor
Chevron White, Cream 10x60

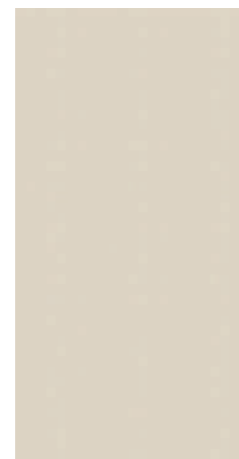
Floor
Chevron White, Cream 10x60



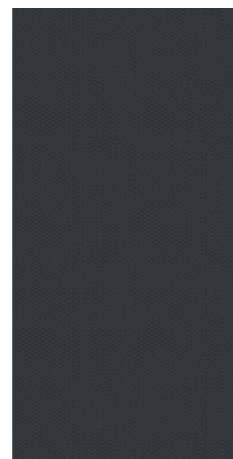
LA GRECA SIGNATURE



G28301
60x120 white



G28302
60x120 cream



G28300
60x120 black



0014056
20x120
white



0014057
20x120
cream



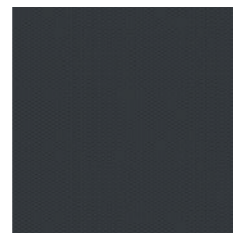
0014058
20x120
black



0014053
60x60 white



0014054
60x60 cream



0014055
60x60 black



0014059
20x60
white



0014060
20x60
cream



0014061
20x60
black



0016052
20x20 white



0016053
20x20 cream



0016054
20x20 black

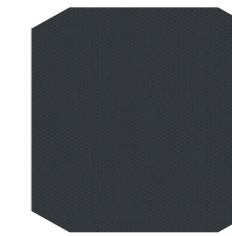
Decors



0014070
60x60 cut white



0014071
60x60 cut cream



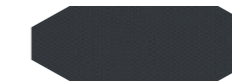
0014072
60x60 cut black



0014073
20x60 cut white



0014074
20x60 cut cream



0014075
20x60 cut black



0014749
11,5x20 insert white



0014750
11,5x20 insert cream



0014751
11,5x20 insert black



0016524
11,5x20 insert gold

LA GRECA SIGNATURE

Chevron



0014062
10x60 chevron white



0014063
10x60 chevron cream



0014064
10x60 chevron black

Decors



G0028381
6x60 torello white



G0028382
6x60 torello cream



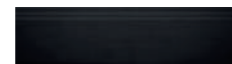
G0028380
6x60 torello black



G0028391
15x60 battiscopa white



G0028392
15x60 battiscopa cream



G0028390
15x60 battiscopa black

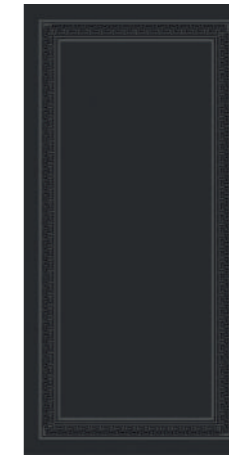
Boiserie



0014139
60x120 boiserie white



0014140
60x120 boiserie cream



0014141
60x120 boiserie black

Stucchi consigliati Suggested grouts



Mapei White
130 Jasmine



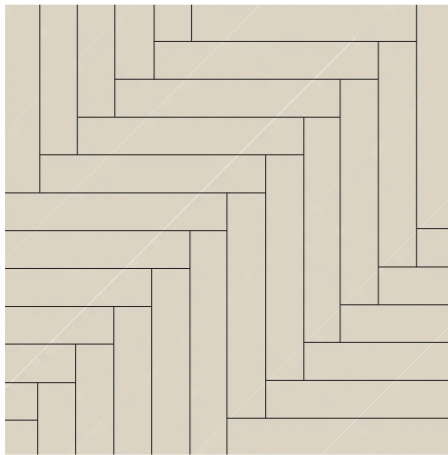
Mapei Cream
137 Caraibi



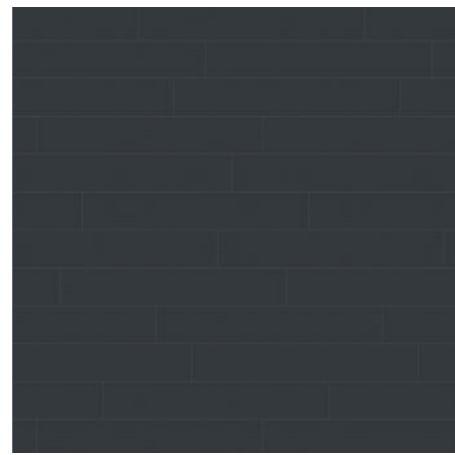
Mapei Black
119 Grigio Londra

LA GRECA SIGNATURE

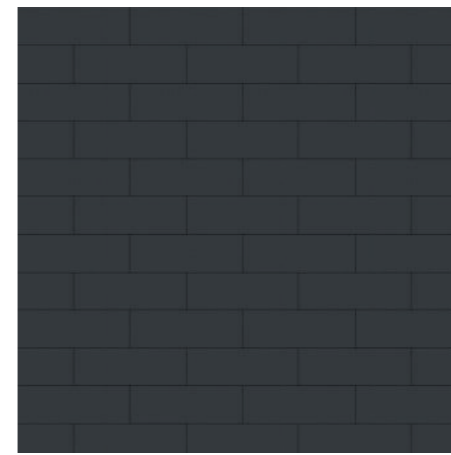
Laying schemes



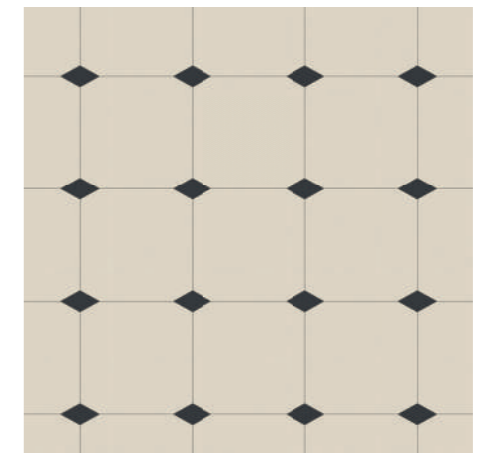
Listoni spina di pesce
20x120 cm



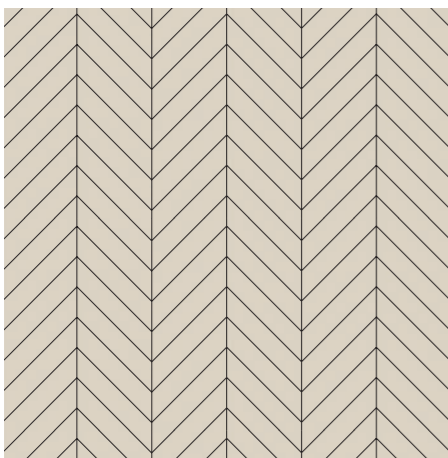
Listoni sfalsati
20x120 cm



Muretto
20x60 cm



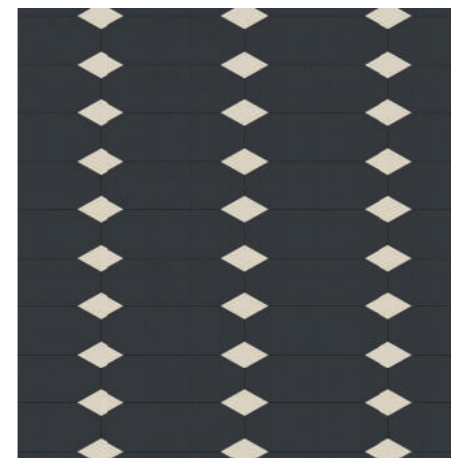
Cut 60x60 cm - 50%
Insert 11,5x20 cm - 50%



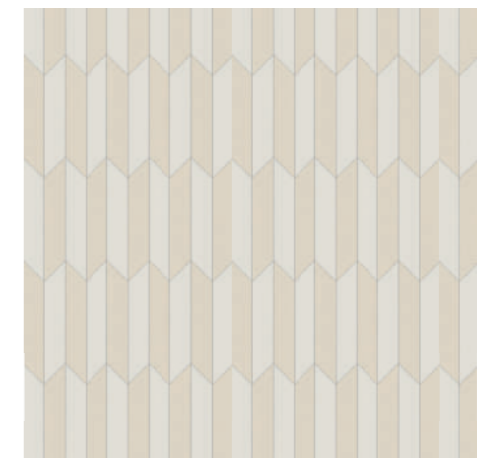
Chevron
10x60 cm



Cassettone
60x60 cm - 66%
20x60 cm - 33%



Cut 20x60 cm - 50%
Insert 11,5x20 cm - 50%



Chevron
10x60 cm

LA GRECA SIGNATURE

Imballi Packing

Formato Size	Spessore Thickness	Pz/scat. Pcs/box	Mq/scat. SqM/boxt	Kg/scat. Kg/box	Scat./Pal Box/pal	Mq/pal SqM/pal	Kg/pal
Fondo 60x120	7	2	1,44	154,55	32	46,08	140,50
Fondo 60x120 Boiserie	7	2	1,44	226,05	32	46,08	205,50
Fondo 60x60	7	4	1,44	138,05	32	46,08	125,50
Fondo 20x120	7	6	1,44	154,55	32	46,08	140,50
Fondo 20x60	7	4	0,48	149,05	32	15,36	135,50
Chevron 10x60	7	12	0,72	204,05	32	23,04	185,50
Fondo 20x20	7	24	0,96	171,05	32	103,68	155,50
Insert 11,5x20	7	20	0,46	-	32	14,72	8,50
Fondo 60x60 cut	7	4	1,44	154,55	32	46,08	140,50
Fondo 20x60 cut	7	8	0,96	154,55	-	-	140,50

I dati relativi a imballaggi e pesi possono subire delle variazioni
 Informations and details related to packaging and weight are subject to change

Caratteristiche tecniche Technical characteristics

Le norme iso queste norme, elaborate dalla iso tc 189, sostituiscono, nei paesi che le hanno riconosciute, le precedenti vigenti.
 The iso standards the standards, them processed by iso tc 189, replace the previous in force, in the countries that have recognized them.

Gres porcellanato
 pressato a secco
 Dry-pressed ceramic tiles,
 fine porcelaine stoneware

Allegato Annex	Gruppo Group	Assorbimento d'acqua (E) Water absorption (E)
G	Bla	E ≤ 0,5%
H	Bib	0,5% < E ≤ 3%
I	Blla	3% < E ≤ 6%
J	Bllb	6% < E ≤ 10%
L	Blll	E > 10%

Superficie naturale: classificazione secondo norme UNI EN 14411 (ISO 13006) ALLEGATO G-Gruppo Bla GL
 Natural surface: classification in accordance with UNI EN 14411 (ISO 13006) ANNEX G-Group Bla GL
 Superficie 3Dtech: classificazione secondo norme UNI EN 14411 (ISO 13006) ALLEGATO G-Gruppo Bla GL
 3Dtech surface: classification in accordance with UNI EN 14411 (ISO 13006) ANNEX G-Group Bla GL

Proprietà fisico-chimiche Chemical, physical and mechanical properties	Norme Standards	Valore prescritto dalle norme Value prescribed by the standards	Valori raggiunti Values achieved
Lunghezza e larghezza dimensione media di ogni piastrella Length and width of the average sizes tile	UNI EN ISO 10545/2	± 0,5%	Conforme According
Spessore Thickness		± 5%	Conforme According
Rettilinearità spigoli Warpages of edges		± 0,5%	Conforme According
Ortogonalità Rectangularity		± 0,6%	Conforme According
Planarità Flatness		± 0,5%	Conforme According
Assorbimento d'acqua Water absorption	UNI EN ISO 10545/3	E ≤ 0,5 %	Conforme According
Resistenza alla flessione Bending strength	UNI EN ISO 10545/4	≥ 35 N/mm ²	Conforme According
Forza di rottura Breaking strenght		< 7,5 mm : ≥ 700 N	Conforme According
Resistenza all'abrasione superficiale per piastrelle gl Resistance to surface abrasion of glazed tiles	UNI EN ISO 10545/7	Test method available	Conforme According
Resistenza agli sbalzi termici Thermal shock resistance	UNI EN ISO 10545/9	Richiesta Required	Resiste Resists
Resistenza al gelo Frost resistance	UNI EN ISO 10545/12	Richiesta Required	Ingelivo Frost proof
Resistenza all'attacco chimico Chemical resistance	UNI EN ISO 10545/13	Min GB	Conforme According
Resistenza alle macchie Resistance to staining	UNI EN ISO 10545/14	Test method available	Conforme According
Resistenza allo scivolamento Slip resistance	B.C.R.A. C.A.	μ 0,19 scivolosità pericolosa dangerously slippery 0,20 < μ < 0,39 scivolosità eccessiva excessively slippery 0,40 < μ < 0,74 attrito soddisfacente satisfactory grip μ 0,75 attrito eccellente - excellent grip	> 0,40
	B.C.R.A. G.B.		> 0,40
	ASTM C 10 2 8 (S.C.O.F.)	Slip resistant (> 0,60)	> 0,60 DRY > 0,6 0 WET
	DIN EN 16 16 5 B	In funzione dell'ambiente o della zona di lavoro Basing on the environment or the working area	R10 (NAT)
	DIN EN 16 16 5 A	-	A+B (NAT)
ANSI A 13 7-1:2 0 12	≥ 0,42	> 0,42	

Le caratteristiche di superficie e le tonalità dei prodotti ceramici illustrati in questo catalogo sono da ritenersi puramente indicative.
Optical features and color shades of ceramic materials illustrated in this catalogue are to be regarded as mere indications.

"All marks created by GIANNI VERSACE S.r.l. Milano, Italy - Trade marks rights reserved to GIANNI VERSACE S.r.l. Milano and its successors in title".

Nessuna iniziativa pubblicitaria potrà essere intrapresa se non previamente autorizzata volta per volta e per iscritto da GIANNI VERSACE S.r.l.
No advertising initiative can be undertaken without previous written authorization given each time by GIANNI VERSACE S.r.l.

"La proprietà intellettuale del presente catalogo è riservata per tutti i Paesi. La traduzione, riproduzione, memorizzazione elettronica e l'adattamento totale o parziale e con qualsiasi mezzo (compresi microfilm e le copie fotostatiche) dei suoi contenuti comporta la violazione dei diritti di copyright di Ceramiche Gardenia Orchidea S.p.A. I prodotti raffigurati nelle immagini del presente catalogo sono protetti secondo la normativa vigente in materia di proprietà industriale".

"All the intellectual property rights of this catalogue are reserved in all countries. Translation, reproduction in print or electronic form, and adaptation, in whole or in part, using any means (including microfilm and photocopy formats) of the contents of the said catalogue constitute a violation of Ceramiche Gardenia Orchidea S.p.A.'s copyright. The products featured in the photographs in this catalogue are protected by current industrial property legislation."

"Il presente documento è da ritenersi strettamente confidenziale, pertanto è riservato alla sola rete vendita VersaceCeramics."
"This document is (to be considered) strictly confidential, therefore it is reserved for the Versace Ceramics sales network only."

VERSACE
CERAMICS

Via Canaletto, 27
41042 Spezzano di Fiorano MO (Italy)
Phone +39 0536 849611
E-mail: info@gardenia.it
gardenia.it | versace-tiles.com

GVLGS-CATA


Ceramics of Italy

