

Catalogue 2022



Micro.

Catalogue 2022

Micro.

ITA **Micro.** è un progetto.

Un progetto aperto e in continuo sviluppo che ricerca l'essenza, il minimo comun denominatore. Cerchiamo l'ergonomia, la sintesi, quella piccola cosa che può cambiare davvero la nostra vita in meglio. Hai presente? Un materiale più leggero e resistente, un rivestimento modellabile, non mettendo mai da parte la bellezza, la comodità e l'uso che ne farai. Collaboriamo con i migliori designer al mondo per portare avanti questo progetto perché ci piace sognare un futuro prossimo dove tutto quello che abbiamo intorno sia così.

ENG **Micro.** is an open project, a work in progress.

We search the essence, the lowest common denominator. We search ergonomics, synthesis, that little thing can really change our lives for a better living. Do you know what we mean? A more lightweight and resistant material, a moldable coat for example.

Beauty, comfort and the use you're going to make of our products is our primary target. We work with the best designers in the world to carry out this project. We dream a future where all you have around is better than ever.

Micropapers



ITA Trame geometriche di piccole dimensioni disegnano sulla carta suggestioni colorate.

ENG Small geometric textures draw colorful suggestions on paper.



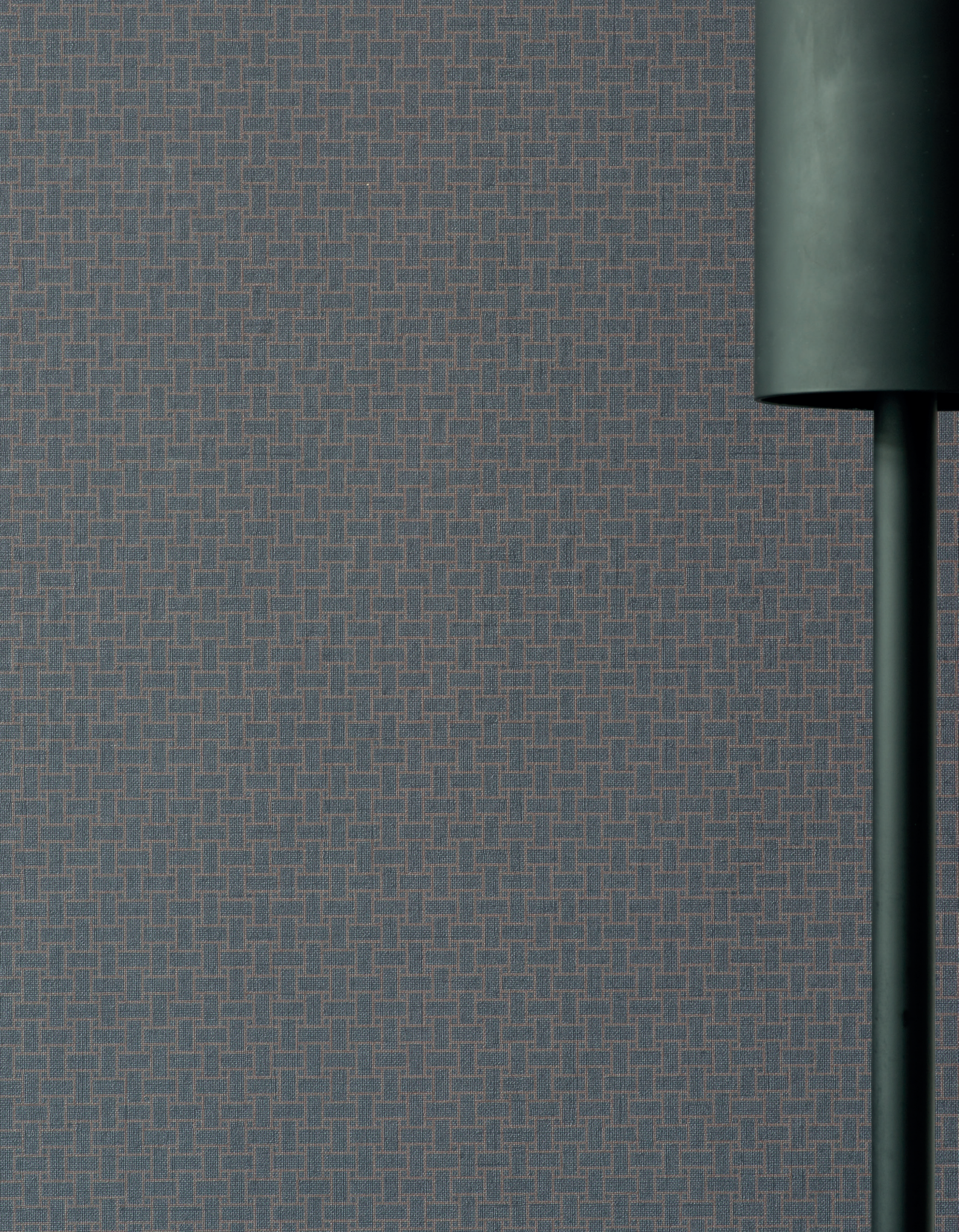














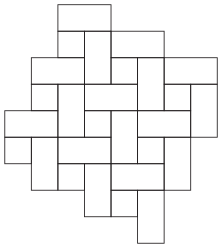
Micro.

Scheme: Ancient
Color: Black/Joint Coffee

137

Micropapers

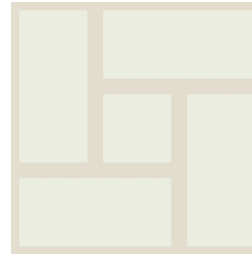
Design
Roberto Cicchinè



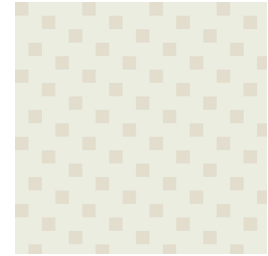
Spiral
48 x 300 cm 100 x 300 cm
19 x 118 inches 40 x 118 inches



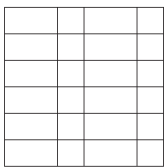
MP01J02.901
Spiral
White/Joint Sand



MPX01J02.901
Spiral x4
White/Joint Sand



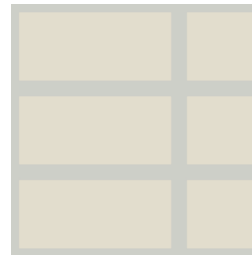
MPS02R01.901
Spiral Mix
White/Sand



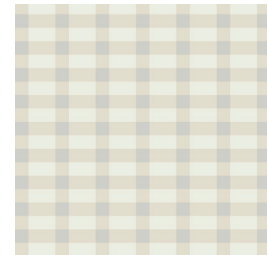
Knit
48 x 300 cm 100 x 300 cm
19 x 118 inches 40 x 118 inches



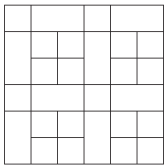
MP02J03.902
Knit
Sand/Joint Dust



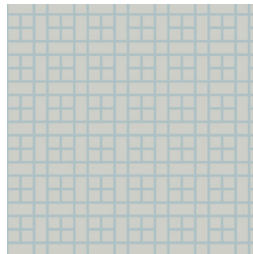
MPX02J03.902
Knit x4
Sand/Joint Dust



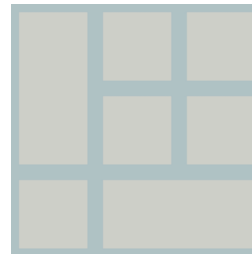
MPS02S03R01R02.902
Knit Mix
White/Sand/Dust



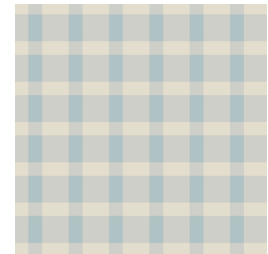
Plaid
48 x 300 cm 100 x 300 cm
19 x 118 inches 40 x 118 inches



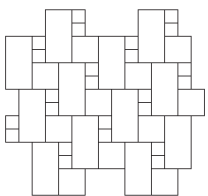
MP03J10.903
Plaid
Dust/Joint Azure



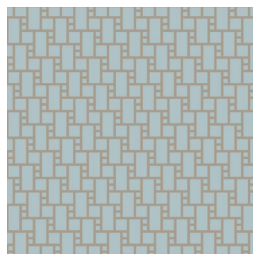
MPX03J10.903
Plaid x4
Dust/Joint Azure



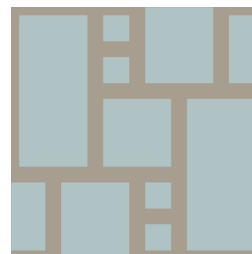
MPS03S10R02R10.903
Plaid Mix
Sand/Dust/Azure



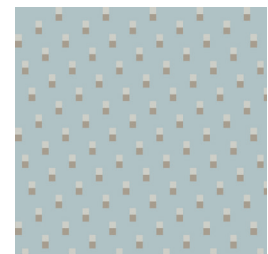
Offset
48 x 300 cm 100 x 300 cm
19 x 118 inches 40 x 118 inches



MP10J06.904
Offset
Azure/Joint Mou



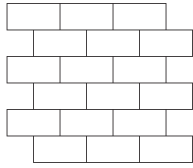
MPX10J06.904
Offset x4
Azure/Joint Mou



MPD03D06S10R10.904
Offset Mix
Dust/Mou/Azure

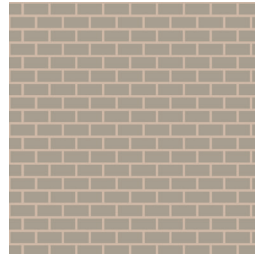
Micropapers

Design
Roberto Cicchinè

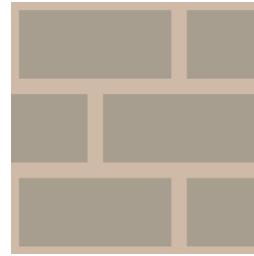


Subway

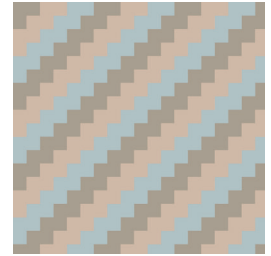
48 x 300 cm 100 x 300 cm
19 x 118 inches 40 x 118 inches



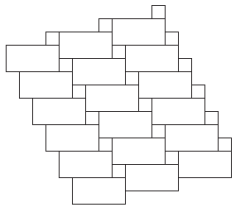
MP06J10.905
Subway
Mou/Joint Terracotta



MPX06J10.905
Subway x4
Mou/Joint Terracotta

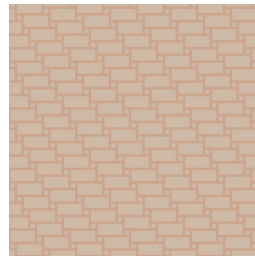


MPR06R10R11.905
Subway Mix
Mou/Azure/Terracotta

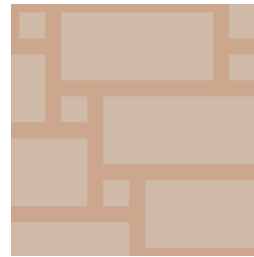


Old

48 x 300 cm 100 x 300 cm
19 x 118 inches 40 x 118 inches



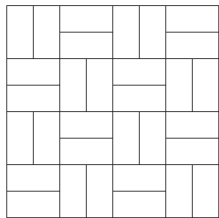
MP10J11.906
Old
Terracotta/Joint Cotto



MPX10J11.906
Old x4
Terracotta/Joint Cotto

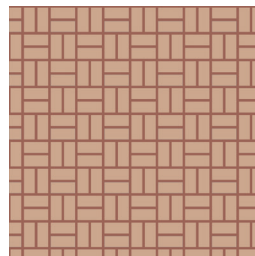


MPD10R11.906
Old Mix
Azure/Terracotta

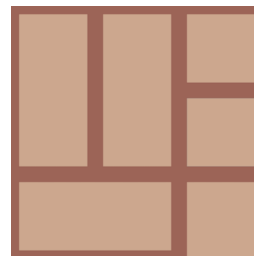


Basket

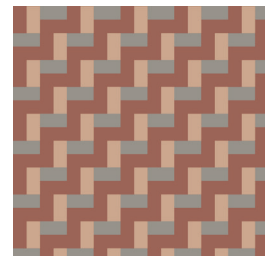
48 x 300 cm 100 x 300 cm
19 x 118 inches 40 x 118 inches



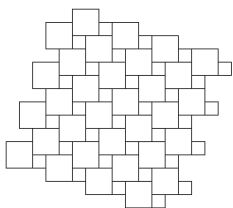
MP11J13.907
Basket
Cotto/Joint Klinker



MPX11J12.907
Basket x4
Cotto/Joint Terracotta

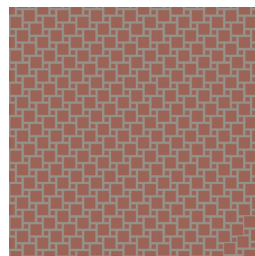


MPR06R12R13.907
Basket Mix
Mou/Cotto/Klinker

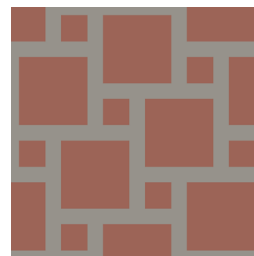


Oddfellow

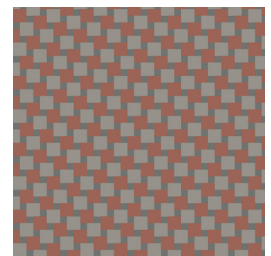
48 x 300 cm 100 x 300 cm
19 x 118 inches 40 x 118 inches



MP13J04.908
Oddfellow
Klinker/Joint Grey



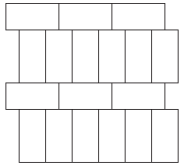
MPX13J04.908
Oddfellow x4
Klinker/Joint Grey



MPD05S04S13.908
Oddfellow Mix
Grey/Mud/Klinker

Micropapers

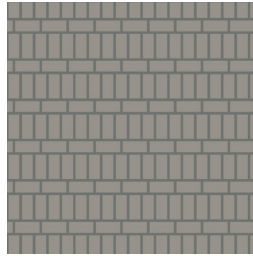
Design
Roberto Cicchinè



Rough

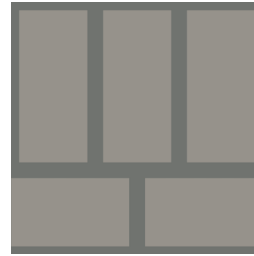
48 x 300 cm
19 x 118 inches

100 x 300 cm
40 x 118 inches



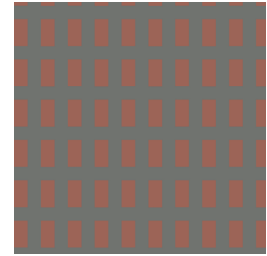
MP04J05.909

Rough
Grey/Joint Mud



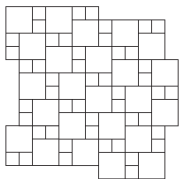
MPX04J05.909

Rough x4
Grey/Joint Mud



MPD05S04S13.908

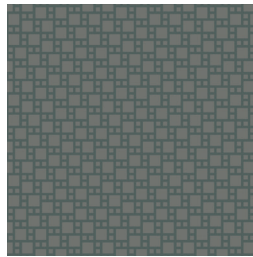
Rough Mix
Mud/Klinker



Double

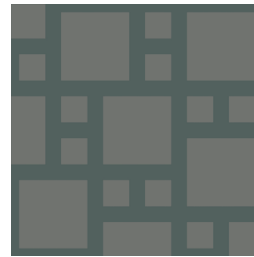
48 x 300 cm
19 x 118 inches

100 x 300 cm
40 x 118 inches



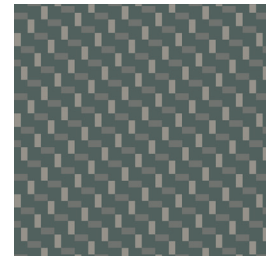
MP05J09.910

Double
Mud/Joint Graphite



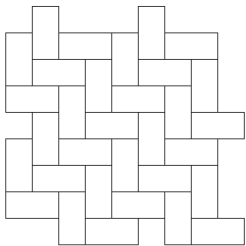
MPX05J09.910

Double x4
Mud/Joint Graphite



MPD04D05S09.910

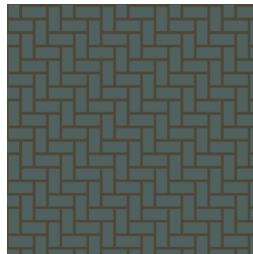
Double Mix
Grey/Mud/Graphite



Herringbone

48 x 300 cm
19 x 118 inches

100 x 300 cm
40 x 118 inches



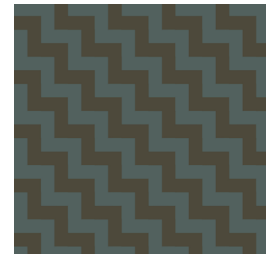
MP09J08.911

Herringbone
Graphite/Joint Coffee



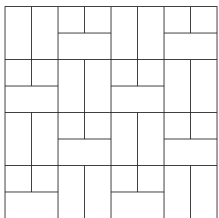
MPX09J08.911

Herringbone x4
Graphite/Joint Coffee



MPR08R09.911

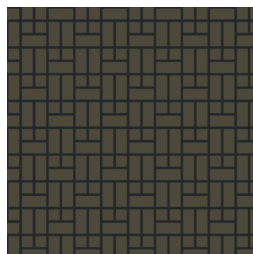
Herringbone Mix
Coffee/Graphite



Modern

48 x 300 cm
19 x 118 inches

100 x 300 cm
40 x 118 inches



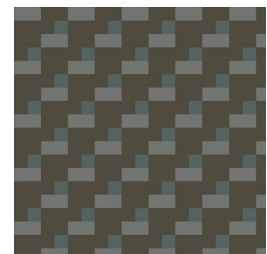
MP08J07.912

Modern
Coffee/Joint Black



MPX08J07.912

Modern x4
Coffee/Joint Black

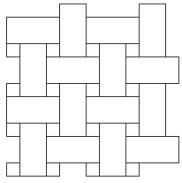


MPS08S09R05R08.912

Modern Mix
Grey/Coffee/Graphite

Micropapers

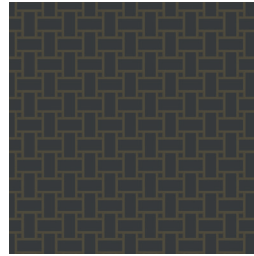
Design
Roberto Cicchinè



Ancient

48 x 300 cm
19 x 118 inches

100 x 300 cm
40 x 118 inches



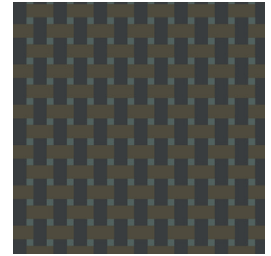
MP07J08.913

Ancient
Black/Joint Coffee



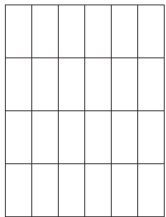
MPX07J08.913

Ancient x4
Black/Joint Coffee



MPD09R07R08.913

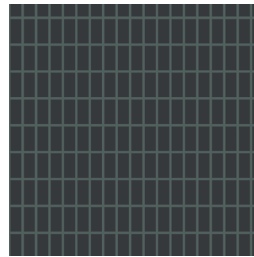
Ancient Mix
Black/Coffee/Graphite



Grid

48 x 300 cm
19 x 118 inches

100 x 300 cm
40 x 118 inches



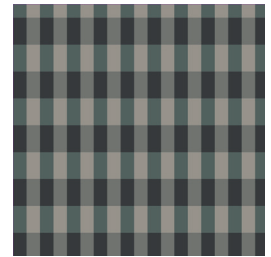
MP07J09.915

Grid
Black/Joint Graphite



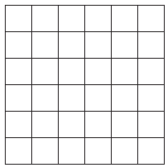
MPX07J09.915

Grid x4
Black/Joint Graphite



MPR04R05R07R09.915

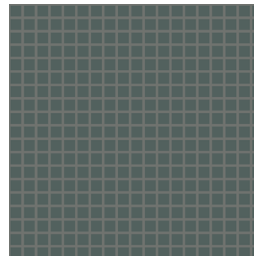
Grid Mix
Grey/Mud/Black/Graphite



Blends

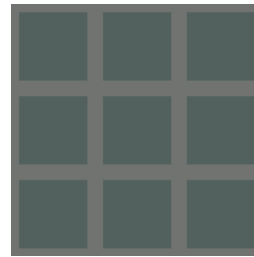
48 x 300 cm
19 x 118 inches

100 x 300 cm
40 x 118 inches



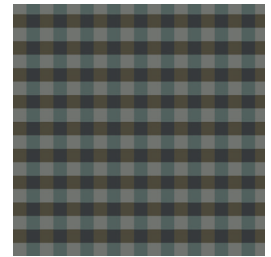
MP09J05.05

Blends
Graphite/Joint Mud



MPX09J05.14

Blends x4
Graphite/Joint Mud



MPS07S08S09.20

Blends Mix
Black/Coffee/Graphite

Caratteristiche tecniche

Technical features

Le soluzioni visive per l'arredamento Micropapers. vengono realizzate interamente in Italia e rispondono alle normative europee per la salute e la tutela dell'ambiente.

Il supporto é formato da due strati.

Il lato superiore é in vinile, il lato stampabile, e nel retro uno strato di TNT (tessuto non tessuto) che conferisce le seguenti caratteristiche al prodotto:

- Inassorbente e inodore;
- Lavabile con acqua e sapone neutro;
- Ignifugo;
- Elevata stabilità dimensionale durante le fasi di applicazione e asciugatura del prodotto;
- Facilità di montaggio e di eventuale rimozione del prodotto.

Per l'applicazione del materiale vinilico Micropapers. si richiede un sottofondo idoneo (liscio, poroso e trattato con un primer aggrappante) per evitare possibili contestazioni.

Mapei. Glicovil

DESCRIZIONE DEL PRODOTTO

Adesivo a base di amidi modificati per rivestimenti murali di ogni tipo.

CAMPI D'IMPIEGO

Glicovil è idoneo per l'incollaggio a parete di rivestimenti murali di ogni tipo su supporto in carta

SU

tutti i sottofondi assorbenti usati in edilizia come ad esempio:

- intonaci di cemento;
- malta bastarda;
- gesso, gesso cartonato.

CARATTERISTICHE TECNICHE

Glicovil è un adesivo a base di amidi modificati, a spalmatura semplice che si presenta sotto forma di piccole scaglie bianche, facilmente disperdibili in acqua. Glicovil è facilmente applicabile a rullo o a spatola. Glicovil non è infiammabile e non contiene sostanze tossiche; pertanto può essere immagazzinato senza particolari accorgimenti e può essere utilizzato senza pericoli per la salute.

PREPARAZIONE DELL'ADESIVO.

Agitare l'acqua con trapano a media velocità versare velocemente il contenuto del sacchetto.

Diluire Glicovil con circa 5-7 litri di acqua (variabile a seconda della grammatura del rivestimento).

Lasciare riposare per 5 minuti e poi agitare nuovamente.

Glicovil è pronto in 10-15 minuti.

Dosaggio: 4-5 litri - Resa: 4-5 rotoli

The visual solutions for the Micropapers. furnishings are carried out entirely in Italy and meet the European standards for health and environmental protection.

The support where the graphics subjects are printed is a vinyl with a layer of TNT (non-woven fabric) on the back that confers the following characteristics to the product:

- Non-absorbent and odourless;
- Washable with mild soap and water;
- Fire resistant;
- High dimensional stability during the application and drying stages of the product;
- Extremely easy to put up and take down if necessary.

For the application of the vinyl material Micropapers. a suitable substrate is required (smooth, porous and treated with a clinging primer) to avoid possible disputes.

Mapei. Glicovil

PRODUCT DESCRIPTION

Modified starch-based adhesive for all types of wall coatings.

WHERE TO USE

Glicovil is suitable for bonding all kinds of paper-backed coating materials on walls.

ON

all absorbent substrates normally used in the building industry, such as:

- cement render;
- lime-mortar render;
- gypsum and plasterboard.

TECHNICAL SPECIFICATIONS

Glicovil is a modified starch-based adhesive which is easy to apply. It is available in the form of small, white flakes which dissolve quickly in water.

Glicovil is easy to apply using a roller or trowel.

Glicovil is not inflammable and does not contain hazardous substances. No special precautions need to be taken for storage purposes, and it may be used without any risk to health.

PREPARATION OF THE ADHESIVE.

Mix the water with a medium-speed drill while quickly adding the contents of the sack.

Dilute Glicovil with approximately 5 to 7 lt. of water (the amount varies according to the weight of the coating).

Let the product stand for 5 minutes and then mix again.

Glicovil is ready in 10-15 minutes.

Dosage: 4-5 litres - Yield: 4-5 rolls

Micropapers. Istruzioni di montaggio

Per L'applicazione del materiale vinilico Micropapers. si richiede un sottofondo idoneo (liscio, poroso e trattato con un primer aggrappante) per evitare possibili contestazioni.

1 Controllo primo rotolo

Misurare il primo rotolo per assicurarsi che esso sia di 10 cm più lungo rispetto all'altezza della parete.

Questa abbondanza è necessaria a compensare eventuali fuori piombo della parete, e verrà tagliata una volta posata la carta.

2 Tracciare le guide

Con le istruzioni di posa davanti tracciate sul muro la fine di ogni rotolo con una matita. Alle due estremità, sinistra e destra, deve rimanere un po' di abbondanza per compensare un eventuale fuori piombo della parete.

3 Preparare la colla

La colla è calcolata appositamente per la superficie da rivestire. Sulla busta è indicata la quantità d'acqua con cui diluire la colla. Versare la colla in un recipiente e poi aggiungere l'acqua. Mescolate in modo continuo per evitare il formarsi di grumi. Per un miglior risultato preparare 24h prima dell'utilizzo.

4 Applicare la colla

Utilizzando un rullo, stendete la colla sul muro in modo omogeneo per la larghezza di un telo.

5 Stendere i teli

Iniziando dal secondo (2°) telo, stendete i teli successivi, dall'alto verso il basso, utilizzando l'apposita spatola da tappeziere avendo cura di non rovinare la carta. Al termine del montaggio, tagliare le eccedenze utilizzando un cutter.

6 Pulire la parete

Con una spugna non abrasiva, ripulite da eventuali residui di colla con acqua.

Micropapers. Installation instructions

To avoid any possible complaints, a proper background base is required to install Micropapers. vinyl wall coverings (smooth, porous and treated with clinging primer).

1 Check the first roll

Measure the first roll to check 5 cm that it is 10 cm longer than the height of the wall. This excess is necessary to compensate if the wall is out of plumb, and will be trimmed once the paper has been applied.

2 Mark guides

With the application instructions in front of you, use a pencil to mark the end of each roll on the wall. There should be a little excess paper at the two ends – left and right – to compensate if the wall is out of plumb.

3 Preparing the adhesive

The quantity of adhesive has been specially calculated for the surface to be covered. The amount of water needed to dilute the adhesive is given on the pack. Pour the adhesive into a container and then add the water. Stir continuously to prevent the formation of lumps. For a better result prepare the adhesive 24H before its use.

4 Applying the adhesive

Using a roller, spread the adhesive evenly onto the wall for the width of one sheet.

5 Applying the sheets

Starting from the second (2nd) sheet, apply the subsequent sheets from top to bottom, using the papering spatula and taking care not to ruin the paper. After applying all the sheets, use a cutter to trim the excess.

6 Clean the wall

Clean off any excess glue using water and a non-abrasive sponge.

Product design and Photography:
Roberto Cicchinè robertocicchine.it

Rendering 3D: Reality
Thanks to: Sbizzurà, Design? Studio
Associato, Eusebi Arredamenti,
Very Simple Kitchen,
Fam. Malavolta Roberto
Fam. Augello Luciano
Ristorante "La Magnana"
Koinema società Coop.Sociale
Radice Quadrata, unopervolta, Mercatino
Usato (San Benedetto del Tronto),
Trullo "Resolana" Castellana a Grotte (BA)
Lab36, M+T architetti - Uliveus
Prospero Ristorante, Lo Studio,
Koinema - Società' Coop. Sociale,
SSAM small artisan manufactures
'Contekst Interior Architects'
'Evenbeeld'.

Printed in January 2022
All rights reserved ©

Micro. is a brand of
Terratinta Group Srl SB

Terratinta Group Srl SB
Via Viazza Il Tronco, 45
41042 Fiorano Modenese MO
ITALY

P IVA IT03197960366

+39 0536 911408
info@terratintagroup.com
info@progettomicro.it

www.terratintagroup.com
progettomicro.it

C
H WE CAN
A CHANGE
N HABITS
G **NOT OUR**
E **PLANET**
BY
TERRATINTA
group



